



62 Federal Rd., Danbury, CT 06810 | 203.744.4070 | info@hartransit.com

[Bikes on Board](#)





Cyclists Welcome

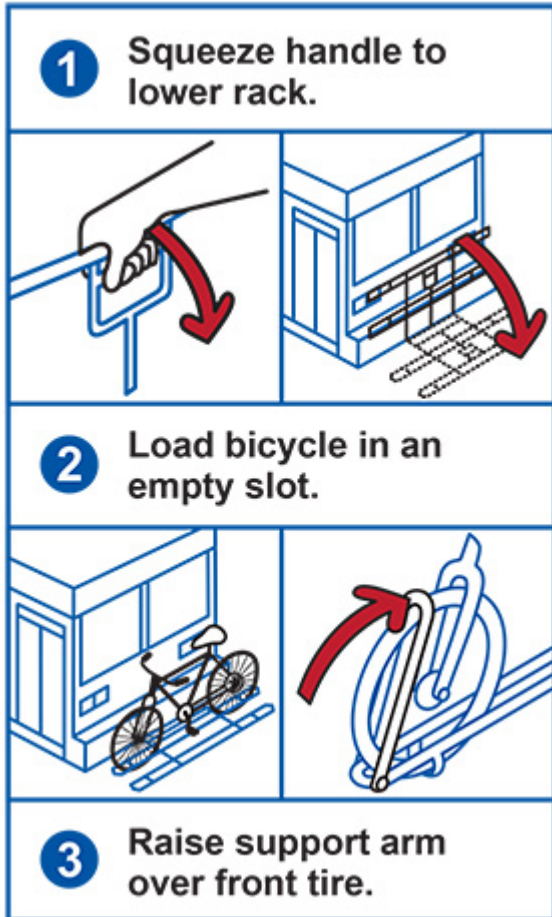
HARTransit welcomes all riders that wish to take their bicycle with them on the bus. Combining your cycling trip with HARTransit allows you to travel further and reach destinations in the Greater Danbury Area not accessible by bicycle or bus alone. Cycling and using HARTransit will not only allow you to reach your destination and save you money, but can also improve your health and well-being.

Rules

- No motorized bikes.
- No bikes over 50 lbs.
- Do not lock your bike to the bus rack.
- Driver is not required to provide assistance loading your bike.
- No regular bikes are allowed on bus.
- If bike rack is full, use the next bus.



How to Use the Bus Bike Rack



[How To Use the Bike Rack Video>](#)

Every bus has a bike rack, and you can expand your travel distance by riding a bike to and from your designated bus route. Learn how here.